

**BENOIT** SYSTEMES



49 Bespoke Inc.  
51 Caldari Road, Units 6-7B  
Concord, ON L4K 4G3  
Tel +1.866.827.4548  
Fax:+1.877.731.7745  
49@49bespoke.com  
www.49bespoke.com

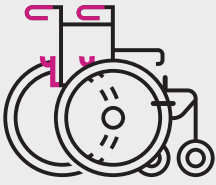
# LIGHT ASSIST 2.1

USER MANUAL




Follow us!

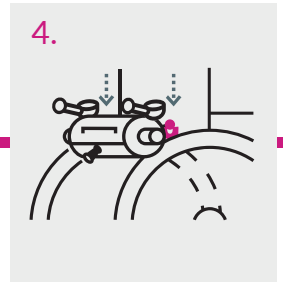
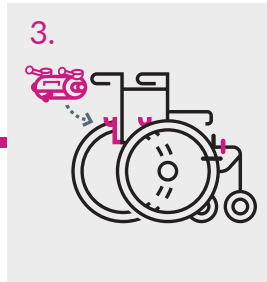
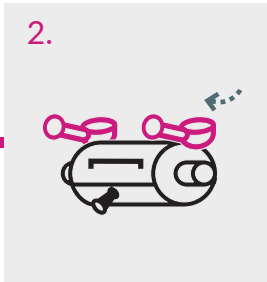
[WWW.BENOITSYSTEMES.COM](http://WWW.BENOITSYSTEMES.COM)



Your wheelchair has been fitted with **hook bars and hooks** that will allow you to set up your power add-on very quickly.  
**Brackets** have been fitted on the wheelchair rear handles to put the Light Assist handles.

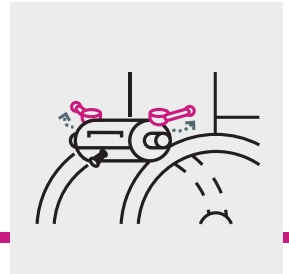
## 1 SETTING UP THE POWER ADD-ON

1. Put the brakes on the wheelchair to make the setting up easier.
2. Point the two clutch handles towards the rear (neutral position) If necessary, pull the black clutch button. 
3. Hold the power add-on with its upper handle and place the axles on the hooks.
4. Make sure that the axles are positioned correctly.



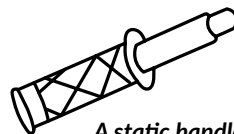
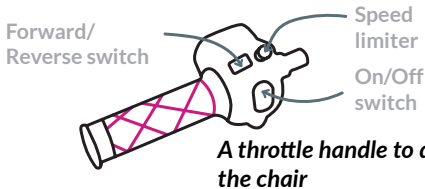
## 2 LOCKING THE HANDLES

1. Extend both telescopic handles to gain more force.
2. Engage both handles always beginning with the right-hand side.



## 3 SETTING UP THE PUSH HANDLES

**Two handles are supplied with the power add-on:**



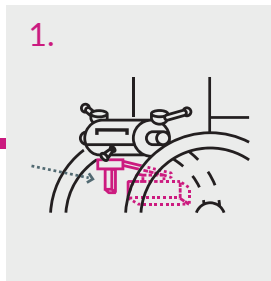
**A static handle to make both handles the same length**

Handles are locked with a pin at the left or right-hand side on the wheelchair rear handles.

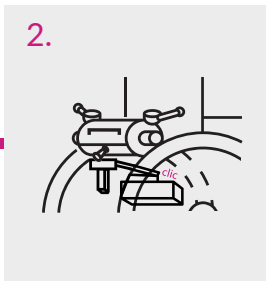
## 4 SETTING UP THE BATTERY

1. Place the battery rack on the battery slider on the power add-on.
2. Firmly push the battery rack until you hear the connectors slot into each other.

1.

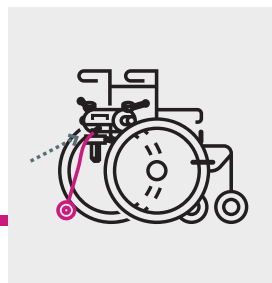


2.



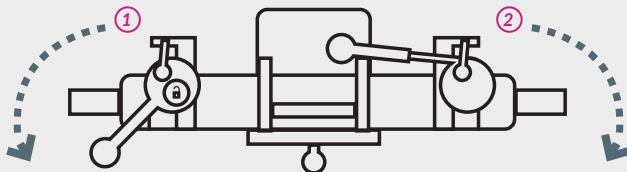
## 5 SETTING UP THE ANTI TIP

Insert the anti-tip into the rear handle on the power add-on (wheel bottom-facing).



### EXTRA FEATURE

Simple shift of the clutch handles is enough to disengage the power add-on and get your usual manual wheelchair back.



- ① Disengage the left handle and turn it to the right.
- ② Disengage the right handle and place it all the way against the backrest.

## INSTRUCTIONS FOR USE

### In confined spaces, there are 2 solutions:

1. Disengage the power add-on and manually operate the wheelchair.
2. Use the speed limiter to freeze the power add-on at a very low speed and drive the wheelchair with the throttle handle.

### As a pavement approaches:

*Don't stop and try to lift the wheelchair!*

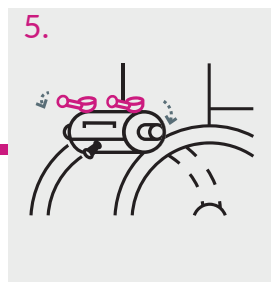
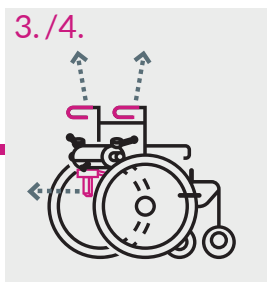
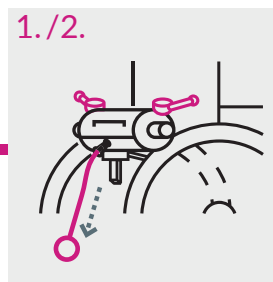
*Slowly approach the pavement, tilt the wheelchair (front castors on pavement) and go on.*

## 6 REMOVING THE POWER ADD-ON

Put the brakes on the wheelchair to make the removal easier.

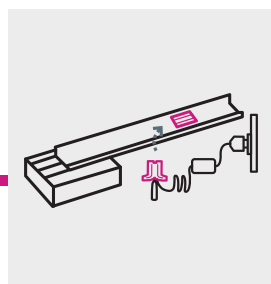
1. Keep the handles engaged.
2. Remove the anti-tip and hang it at the designated location on the battery.
3. Unlock the battery with the help of the rack locking mechanism and pull it towards rear.
4. Remove the two Light Assist<sup>2</sup> handles and store them in the designated position at the rear of the engine.
5. Place the clutch handles in neutral position (pull the black button).

Lift the power add-on by grabbing the upper handle. Axles should come off the hooks.



## 7 RECHARGING THE BATTERY

Connect both red connectors on the battery and charger together then plug the charger into the power supply. Disconnect once the load is complete.



### READ THE SERVICE MANUAL

for driving, security  
and maintenance  
instructions



📍 7 Rue du Pont, 21450 Billy Les Chanceaux FRANCE  
☎ (+33) 3 80 96 51 25 | @ export@benoitsystemes.com

WWW.BENOITSYSTEMES.COM